

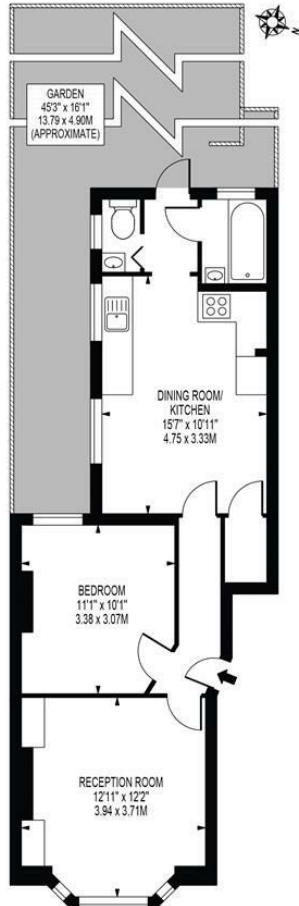
**Oxford Avenue
Wimbledon Chase, SW20 8LS**

£375,000 Leasehold



Guide Price £375,000 to £400,000 - This versatile 530 sqft TWO DOUBLE BEDROOM, Edwardian ground floor maisonette (circa 1910) has direct access into its own private rear garden, an extended 104 year lease and NO ONWARD CHAIN. Located on a popular tree lined cul de sac within the Wimbledon Chase Primary School admissions priority area and close to transport from Wimbledon Chase Station (0.1 mile), Raynes Park Station (0.6 Miles) and Dundonald Tram stop (0.6 Miles).

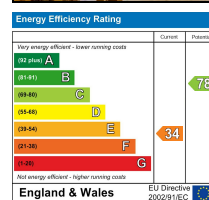
OXFORD AVENUE,
WIMBLEDON CHASE
APPROXIMATE GROSS INTERNAL FLOOR AREA: 630 SQ FT - 49.24 SQ M



GROUND FLOOR
FOR ILLUSTRATION PURPOSES ONLY

THIS FLOOR PLAN SHOULD BE USED AS A GENERAL OUTLINE FOR GUIDANCE ONLY AND DOES NOT CONSTITUTE IN WHOLE OR IN PART AN OFFER OR CONTRACT. ANY INTENDING PURCHASER OR LESSEE SHOULD SATISFY THEMSELVES BY INSPECTION, SEARCHES, ENQUIRIES AND FULL SURVEY AS TO THE CORRECTNESS OF EACH STATEMENT. ANY AREAS, MEASUREMENTS OR DISTANCES QUOTED ARE APPROXIMATE AND SHOULD NOT BE USED TO VALUE A PROPERTY OR BE THE BASIS OF ANY SALE OR LET.

- Two Double Bedroom Edwardian Conversion Flat
- Private Rear Garden - Potential To Extend S.T.P.P
- Within The Wimbledon Chase Primary School A.P.A
- 0.1 Mile to Wimbledon Chase Station and Shops
- 0.6 Miles to Raynes Park Station and High Street
- Extended Lease - 104 Years Remaining
- Versatile Accommodation
- No Onward Chain
- EPC Rating - F
- Council Tax Band - C



For Free Mortgage Quote and Best Mortgage Rates, call Ellisons Mortgage Advisor on 0208 944 9595



Although these particulars are believed to be correct, their accuracy is not guaranteed and they do not form part of any contract.

Celebrating 30 years of successful Sales and Lettings in Merton

